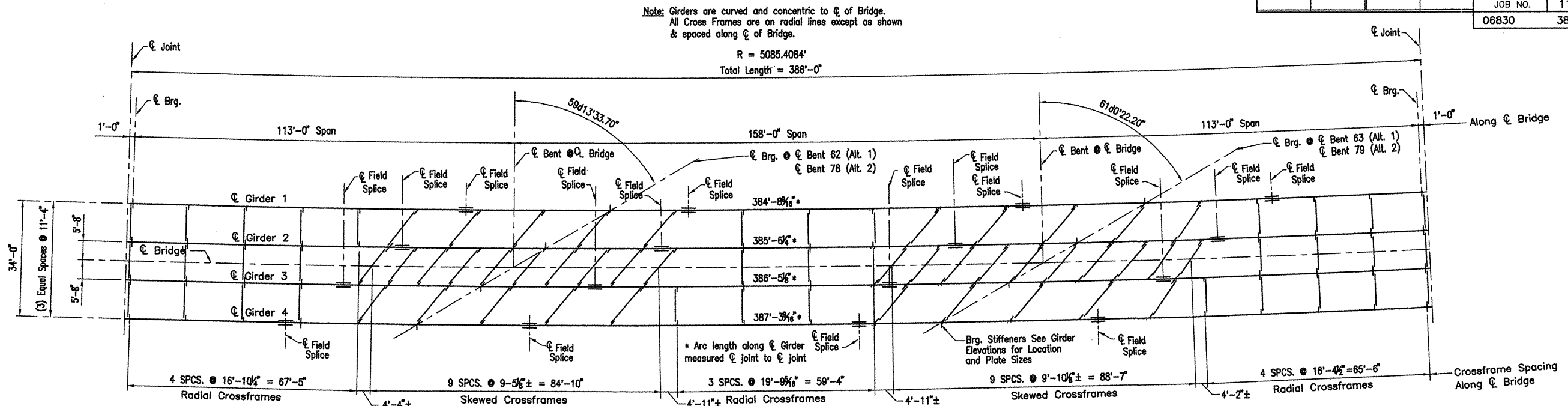


COMPANY 1999 JOBS\99-044 AHTD\WHITERIVER\JOB 110395\386 Girder Unit 1 ACAD SCALE: 1/16"=1'-0"

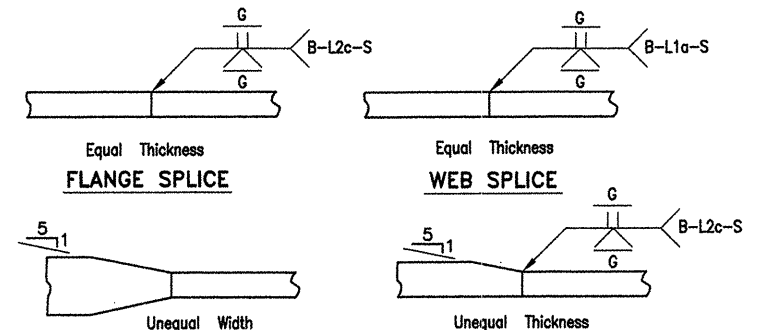
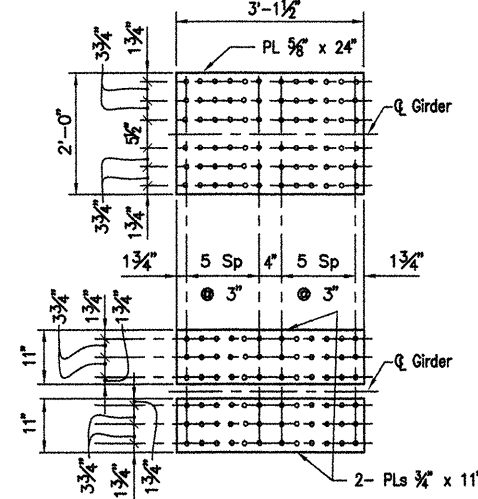
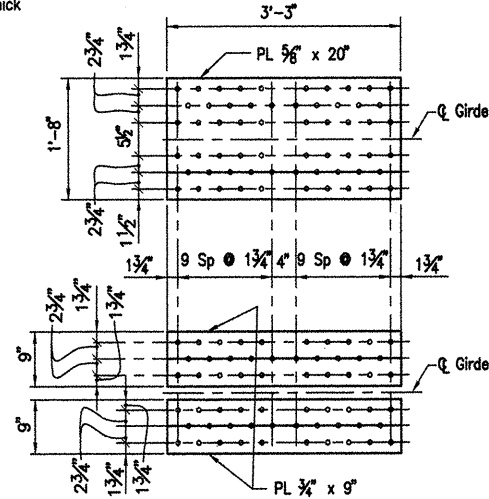
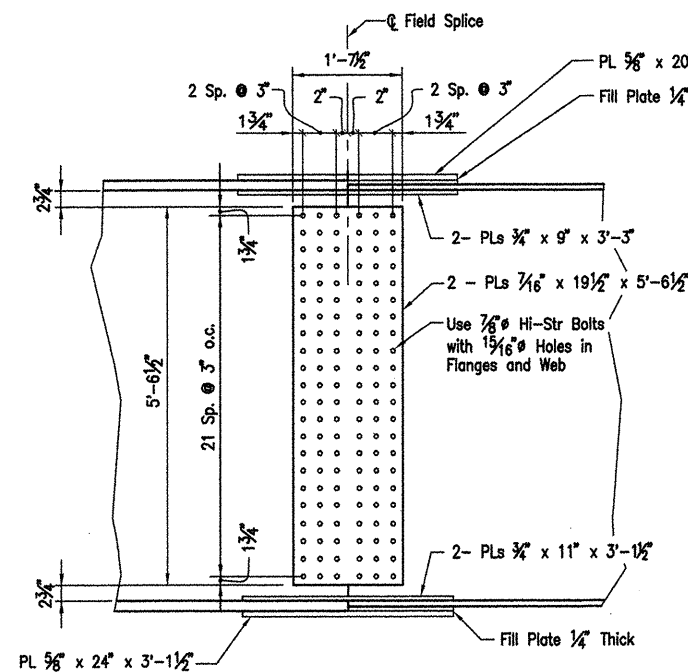
DATE REVISED	DATE FILMED	DATE REVISED	DATE FILMED	FED. ROAD NO.	STATE	FED. AID PROJ. NO.	SHEET NO.	TOTAL SHEETS
					ARK.			
				JOB NO.		110395	92	243
				06830		386' UNIT		47086



FRAMING PLAN 386' CONT. COMP. PLATE GIRDER UNIT 1

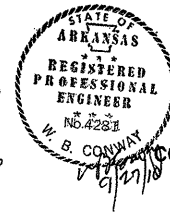
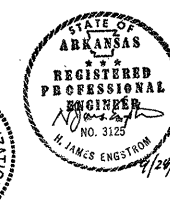
Scale: N.T.S.

Station 289+70 to Station 293+56 (1 Unit Required)



Note: Fabricator may submit Alternate Pre-Qualified Full Penetration weld for approval by Engineer.

DETAILS OF WELDED SPlices (OPTIONAL)



ALTERNATE NO. 1 & 2

DETAILS OF 386' CONT. COMP. PLATE GIRDER UNIT (SHEET 2 OF 11)

WHITE RIVER STR. & APPRS. (CLARENDON) (PH III) (F) MONROE COUNTY

ROUTE 79 SEC. 13

ARKANSAS STATE HIGHWAY COMMISSION
LITTLE ROCK, ARK.

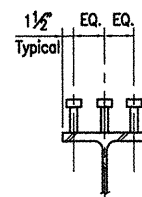
Engstrom/Modjeski and Masters, Inc.

DRAWN BY: CJA/JDB DATE: Sep. 10 FILENAME: b11039514_s02
CHECKED BY: WBC DATE: Sep. 10 SCALE: 1/16"=1'-0"
DESIGNED BY: GPT DATE: Sep. 10
BRIDGE NO. 06830 DRAWING NO. 47086

BRIDGE ENGINEER

SHEAR CONNECTION DETAIL

Scale: 1"=1'-0"



Stud Shear Connectors shown shall be 7/8" ϕ x 6" long, granular flux filled, solid fluxed or equal, and automatically end welded to the beam flange in accordance with the recommendations of the Manufacturer. 3/4" ϕ studs may be used in place of the 7/8" ϕ studs shown at the ratio of 1.361-3/4" ϕ studs in place of one 7/8" ϕ stud. 7/8" ϕ studs will be used as basis for measurement of structural steel in shear connectors. Maximum stud spacing = 20".

NOTES:

- All Steel To Be AASHTO M270, GR.50W.
- See Dwg. No. 47085 For General Notes.
- See Dwg. No. 47102 - 47103 For Bearing Details.
- See Dwg. Nos. 47089 and 47090 For Cross Frame Details.
- See Dwg. Nos. 47095 to 47097 For Expansion Details.
- Bolted Field Splices Shown May Be Eliminated Or Shop Welded Splices May Be Substituted With Approval Of The Bridge Engineer. Payment Will Be Made On The Basis Of The Bolted Splices Shown.

TABLE FOR WELD

Material Thickness of Thicker Part Joined (Inches)	Minimum Size of Fillet Weld (Inches)	Single Pass Weld Must Be Used
To 1/2" Inclusive	3/16"	
Over 1/2" to 3/4"	1/4"	
Over 3/4"	5/16"	

NOTE: When a fillet weld size, as shown on the plans, is larger than the minimum, the first pass shall be that specified for minimum size of fillet weld.